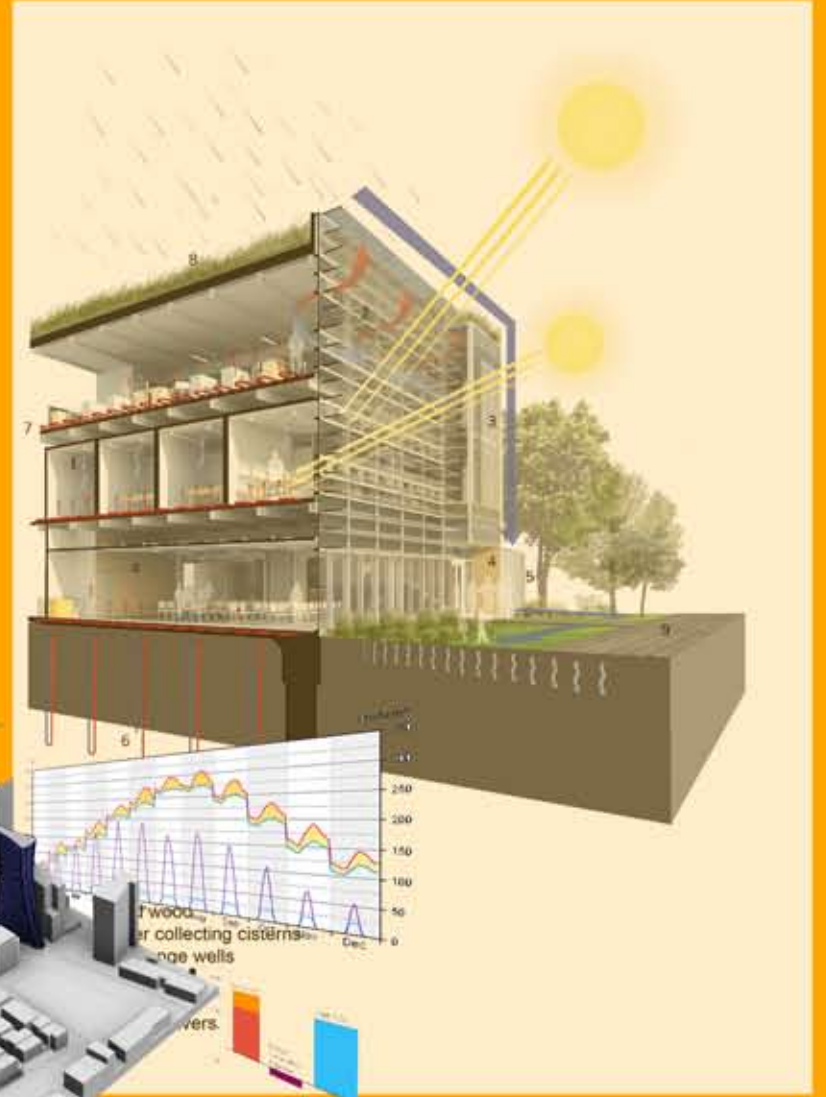
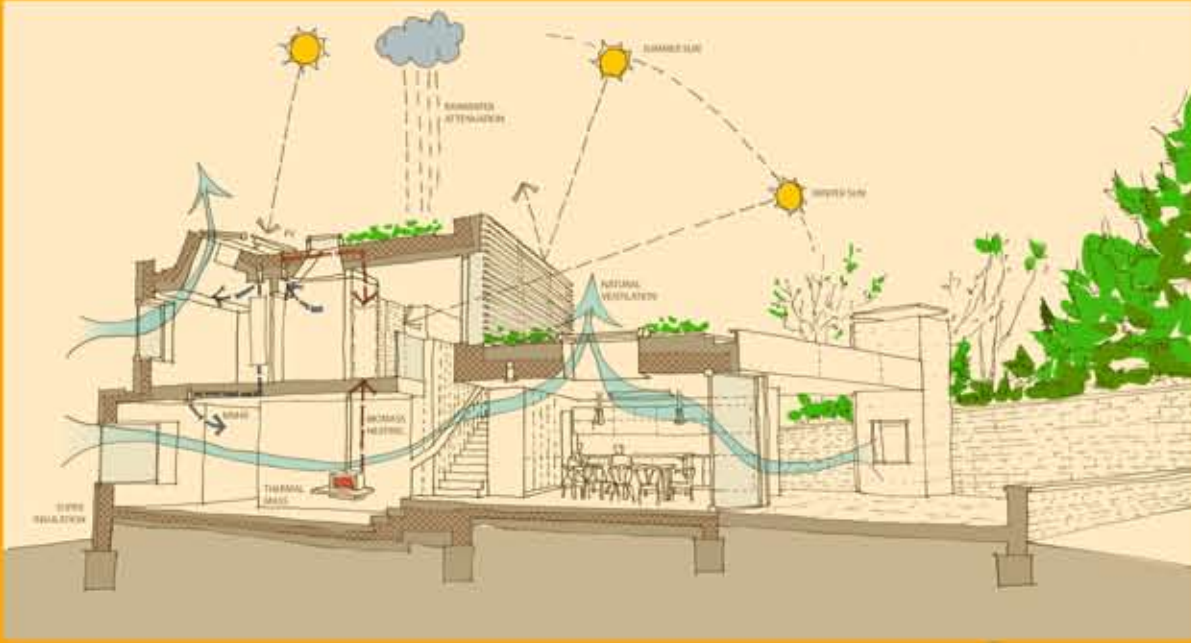




M.V.P Samaj's

**COLLEGE OF ARCHITECTURE , NASHIK**

Udhoji Maratha Boarding Campus ,Off Gangapur Road ,  
Nashik - 4220013

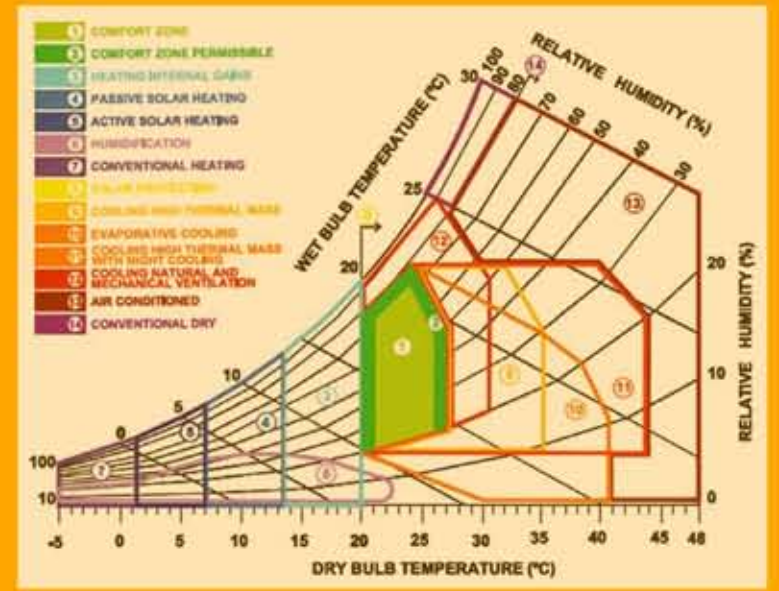
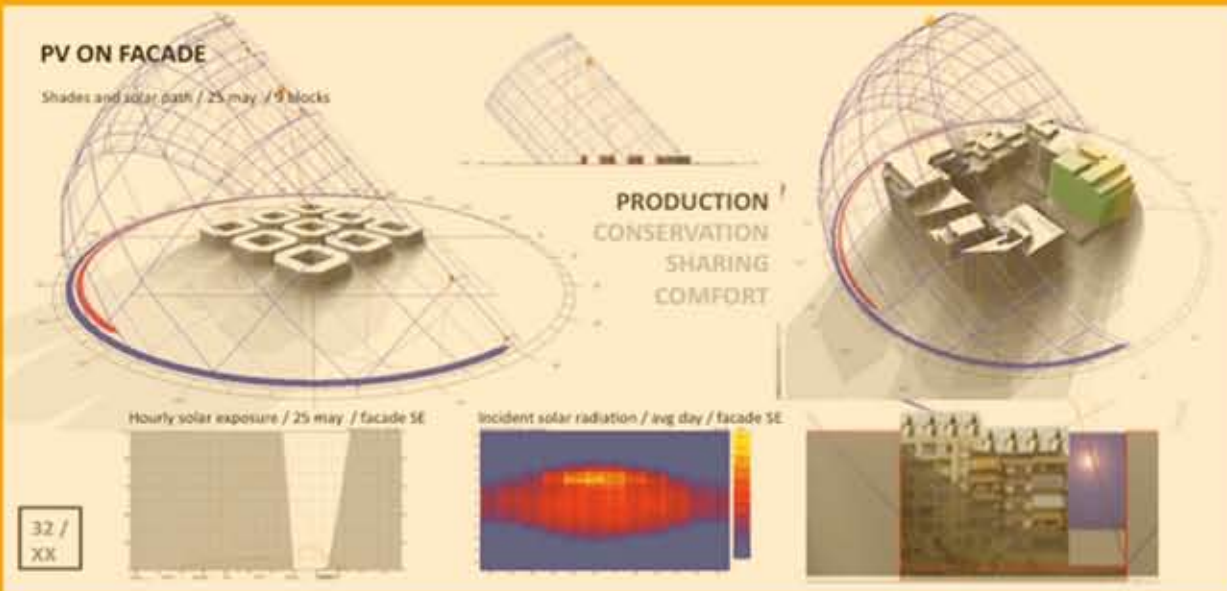


Admissions open  
for 2023-25

# M.ARCH

## Environmental Architecture

Two - year Masters Programme for Architectural Graduates



Affiliated to Savitribai Phule Pune University & Approved by Govt. of Maharashtra  
Approved by council of Architecture

For Details - [www.cansnashik.org](http://www.cansnashik.org)  
E-mail - [cansnashik@mvp.edu.in](mailto:cansnashik@mvp.edu.in)  
Eligibility - B.Arch with 50% marks ( 45% for Backward Class , EWS, PDH ) , MAH-M.ARCH CET-2023  
Contact - 91-253-2570822 / 9075007717  
Suruchi Randive - 98227 04409 , Ankita Pathre - 9970803376